

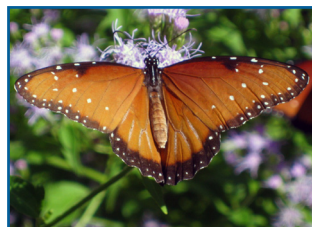
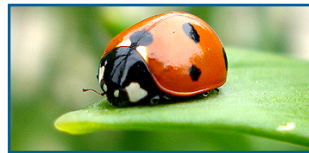
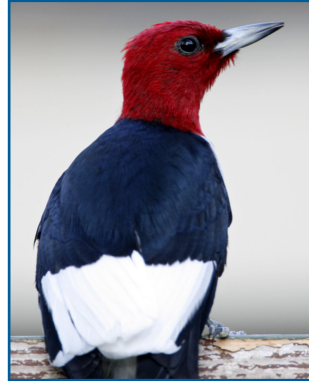
Using Plants to Attract Wildlife

If you want a natural environment for your yard, nature has already created the perfect landscape ecosystem template for you to copy. A good place to start if you want to attract wildlife to your yard is to group similar plants together in your landscape to mimic nature.

Choose plants for specific types of wildlife

When choosing plants for your landscape, think about the kind of wildlife you want to attract. Important plant groups to consider include:

- Conifers
- Grasses
- Nectar-producing plants
- Plants that bear fruit in summer and fall
- Winter-persistent plants
- Plants that bear nuts or acorns



Plant a variety

The larger the variety of plants you grow, the more types of wildlife your yard will attract. To keep the wildlife coming to your yard year round, select plants that will produce food during each season.

Use native plants

Native plants offer the best sources of food for the local wildlife, and they are best suited to your soil and climate conditions. Well-adapted nonnative plants are also good options.

WaterSmart Plants to Use

Several [WaterSmart](#) plants attract birds and butterflies. For more plants that draw wildlife, see the [Native Plant Database](#) of the Lady Bird Johnson Wildflower Center and the [Earth-Kind Plant Selector](#).



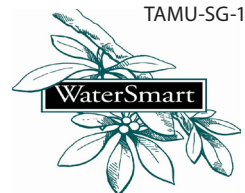
Photos by Chris LaChance and David and Linda McDonald

WaterSmart.tamu.edu



Stephanie Hendrickson
WaterSmart Program Assistant
Texas A&M Agrilife Extension/Texas Sea Grant
shendrickson@tamu.edu
Watersmart.tamu.edu

TAMU-SG-16-509



Publication funded by a Texas Coastal Management Program Grant approved by the Texas Land Commissioner pursuant to National Oceanic and Atmospheric Administration Award No. NA14NOS4190139.

Texas A&M AgriLife does not discriminate on the basis of race, color, religion, sex, national origin, disability, age, genetic information, veteran status, sexual orientation or gender identity and provides equal access in its programs, activities, education and employment.