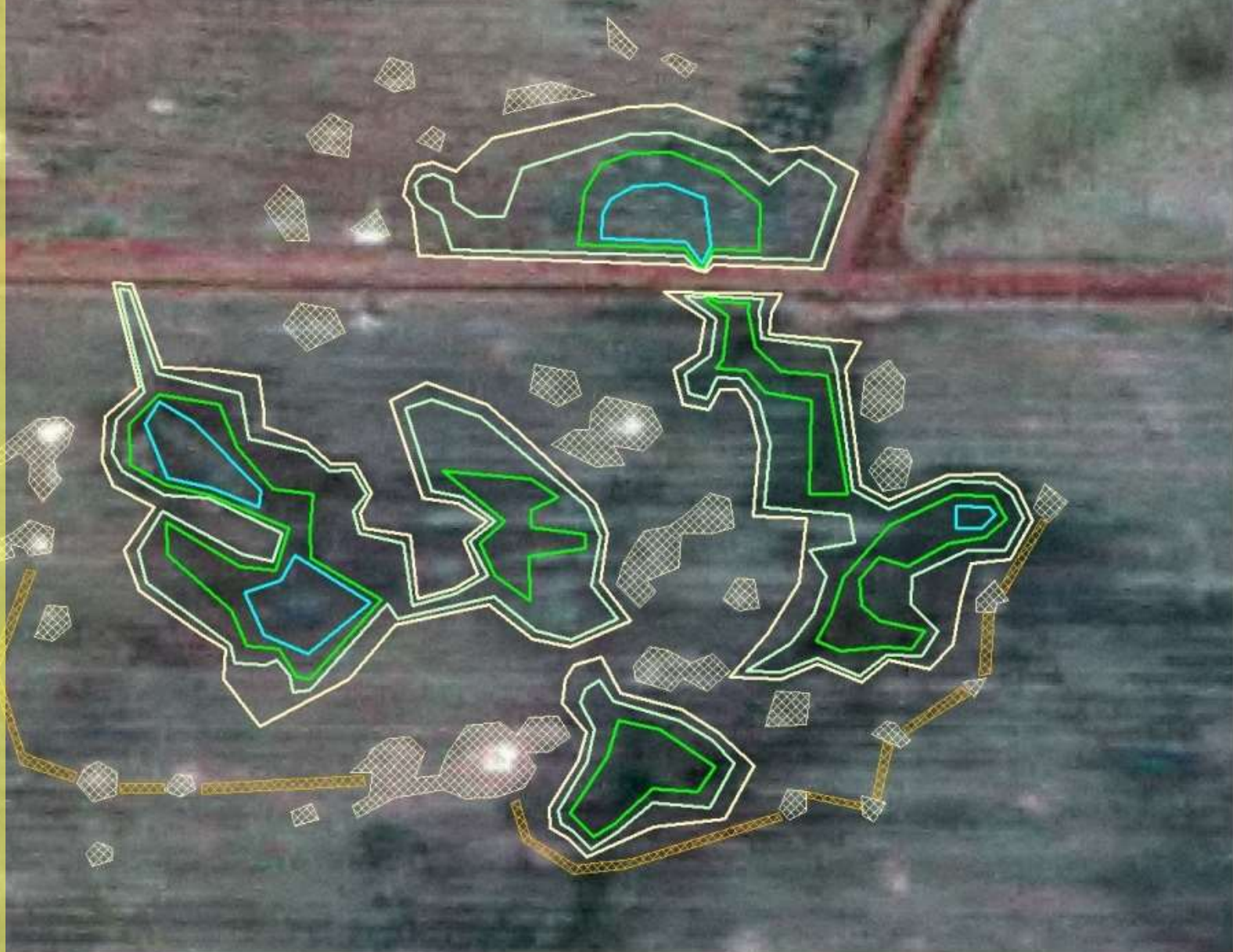


*The Beginning: Phase 1 of
the Wetland Restoration at
Sheldon Lake State Park*



In 2003, Texas Parks and Wildlife Department embarked on a unique restoration project at Sheldon Lake State Park. These are the original drawings for the proposed ponds. The following slides show how the ponds "grew".



- Wetland excavation boundary
- 6 inch
- 12 inch
- 18 inch
- Mima
- 42.5' Berm



Approximation of Historic Wetland and Mima Conditions





Construction of the wetland basins in Phase 1 began in the Fall of 2003. Dozers and backhoes removed dirt and shaped the slopes of each of the original 4 ponds.



Texas AgriLife Extension Service was contracted to install the vegetation for the excavated basins. The first workday at Sheldon Lake State Park as part of Phase 1 of the wetland restoration was difficult to say the least. The ground was hard-packed from years of ag production and we had no rain prior to the workday to soften the surface. The Boy Scouts and Wetland Team mentors worked diligently to get the plants in the ground.

2004

The Wetland Restoration Team, guided by Texas AgriLife Extension Service, planted roughly 12,000 plants in the 10 acres of the Phase 1 wetlands.



2005

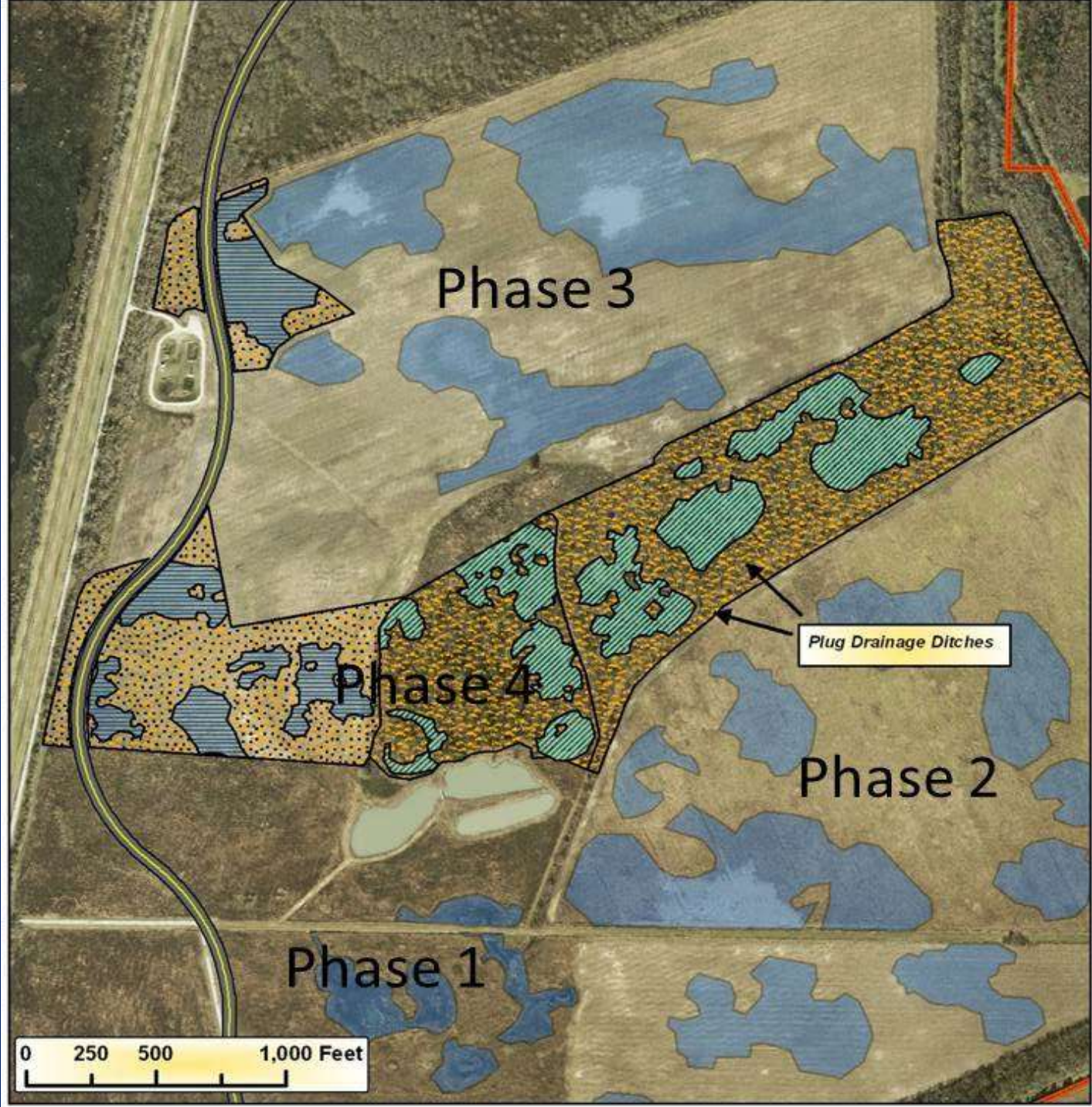


2006



2008

The success of Phase 1 spurred the implementation of phase 2 and 3 of the restoration. These phases began construction in 2009 with the support of the US. Fish and Wildlife Service Coastal program and North American Wetland Conservation Council.





June 2011



June 2012



In 2010, with support from U.S. Environmental Protection Agency and Texas State Soil and Water Conservation Board, Texas AgriLife Extension Service and the Wetland Team installed 56,000 plants into Phase 2 and 3. After 7,500 Team volunteer hours and 3,000 student hours, the Phase 2 and 3 ponds are holding their own.

And the story continues, as Phase 4 has received funding from EPA/TSSWCB and Galveston Bay Estuary Program.